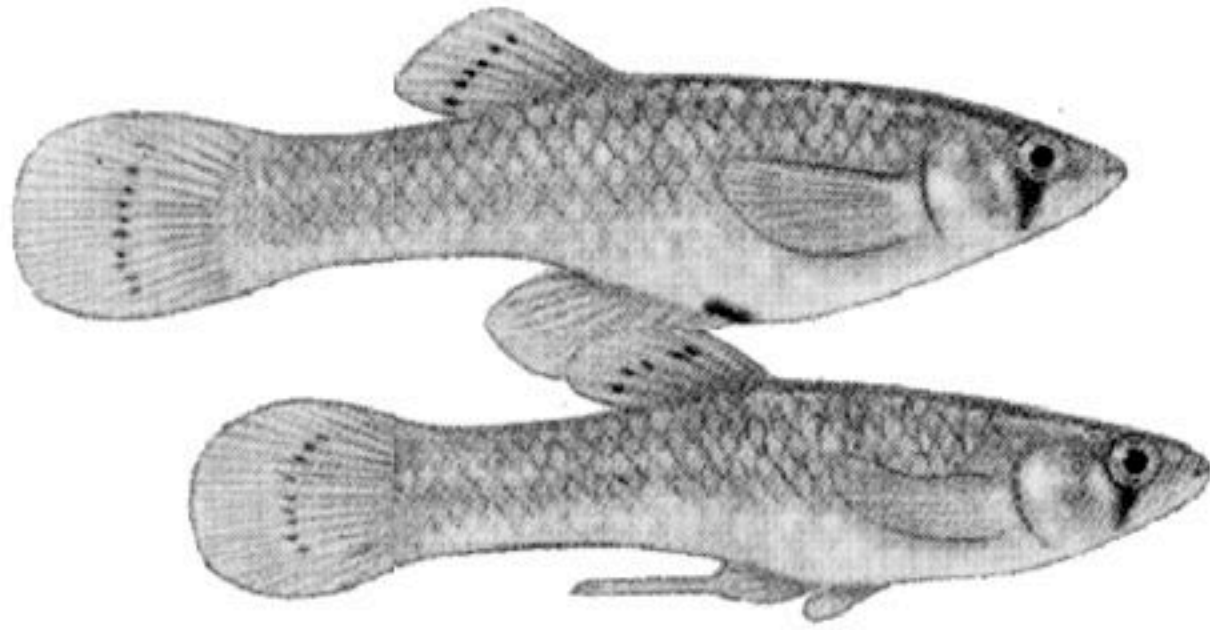
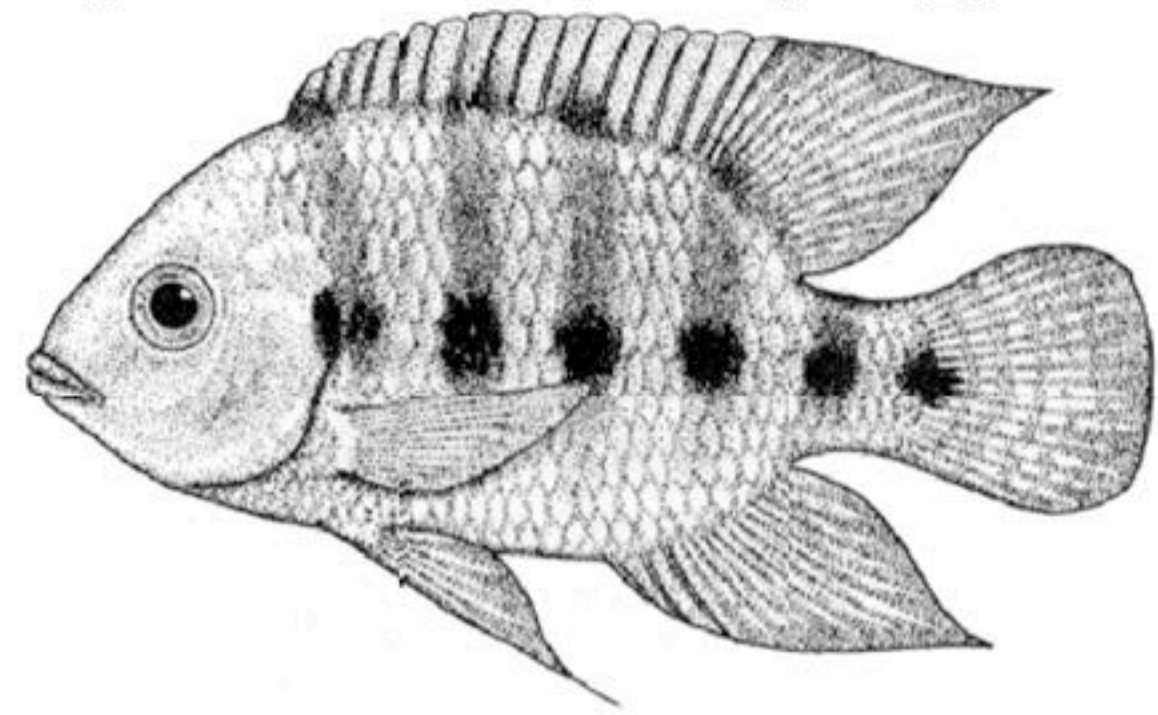


# POND COMMUNITY



mosquitofish



tilapia



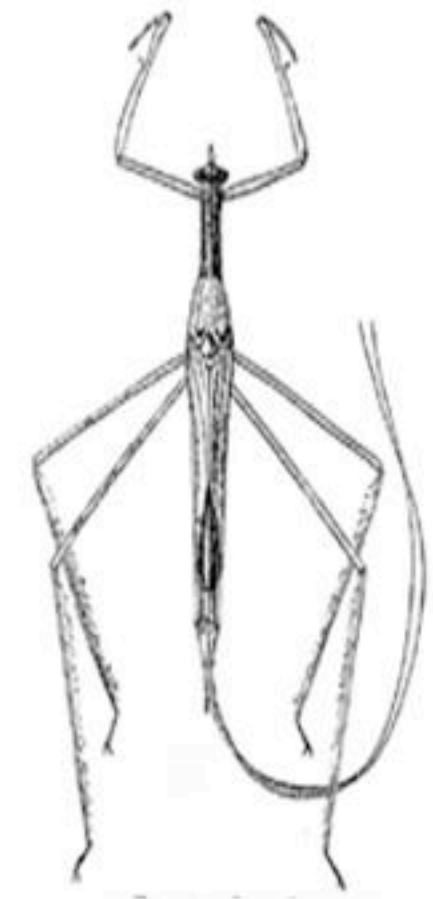
giant water bug



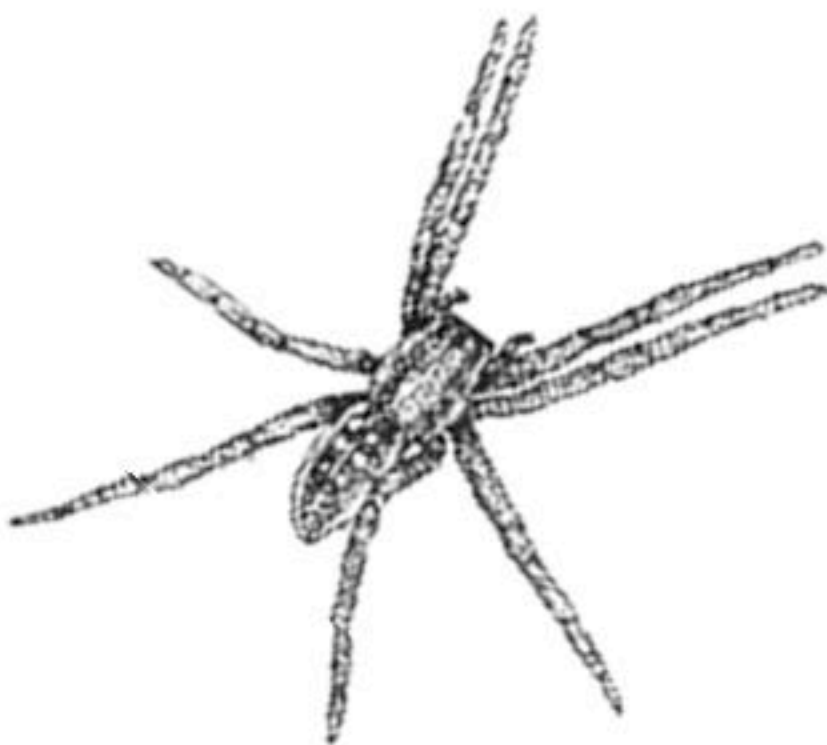
whirligig beetle



water boatman



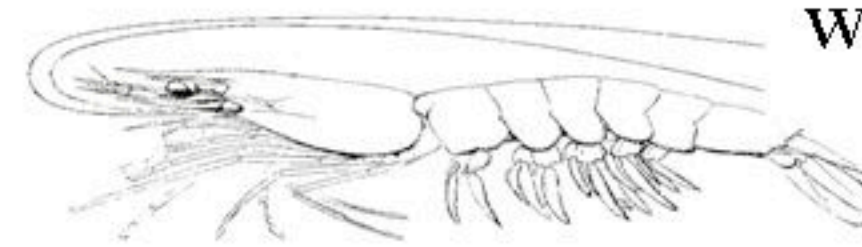
water scorpion



fisher spider



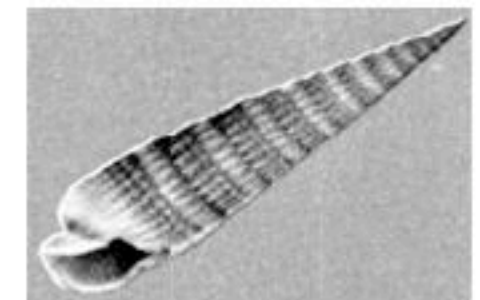
blue crab



freshwater shrimp



hairy wheel snail



auger snail

## Pond Review

- ✦ Which animals do you recognize from your pond exploration?
- ✦ Do these animals live in fresh water, salt water or brackish water?
- ✦ Why did we return the animals we collected?
- ✦ Classify these animals. Write:

H next to **herbivores**

C for **carnivores**

O for **omnivores**

S for **scavengers**

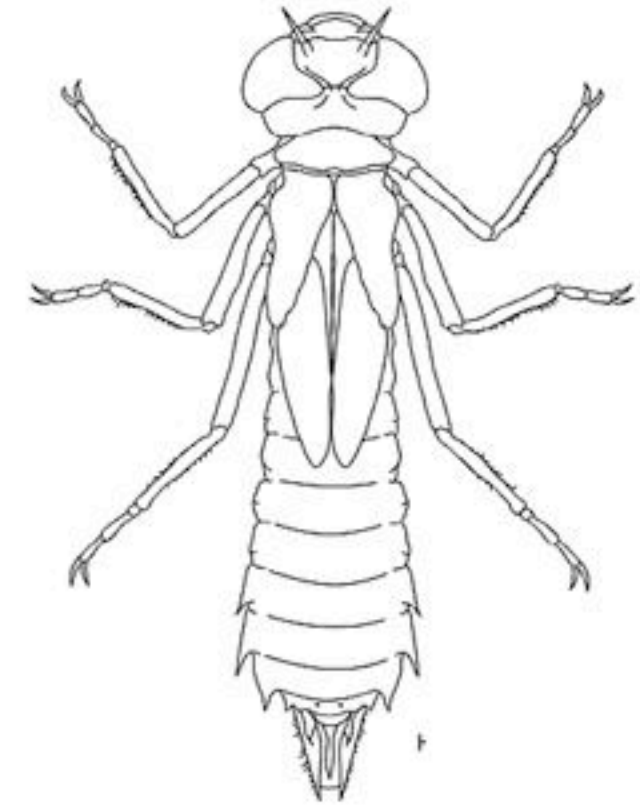
D for **decomposers**



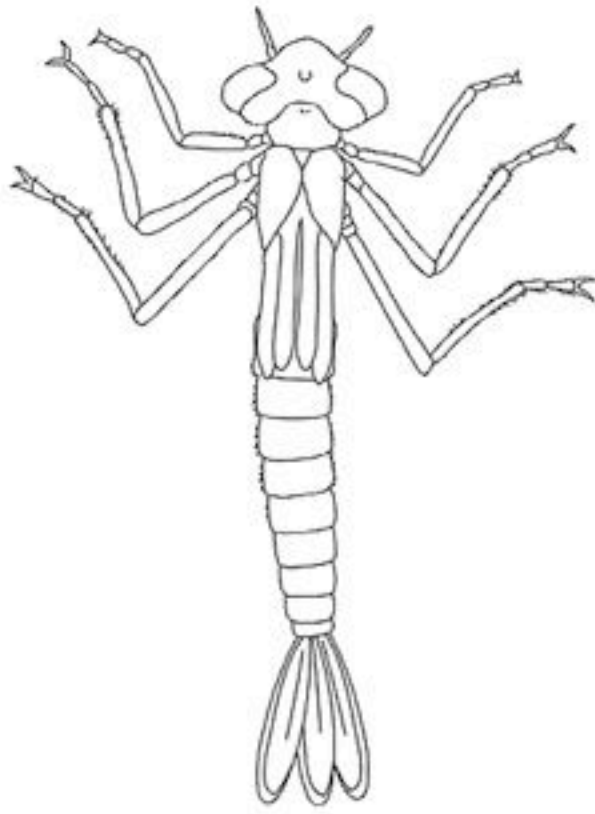
mosquito larvae



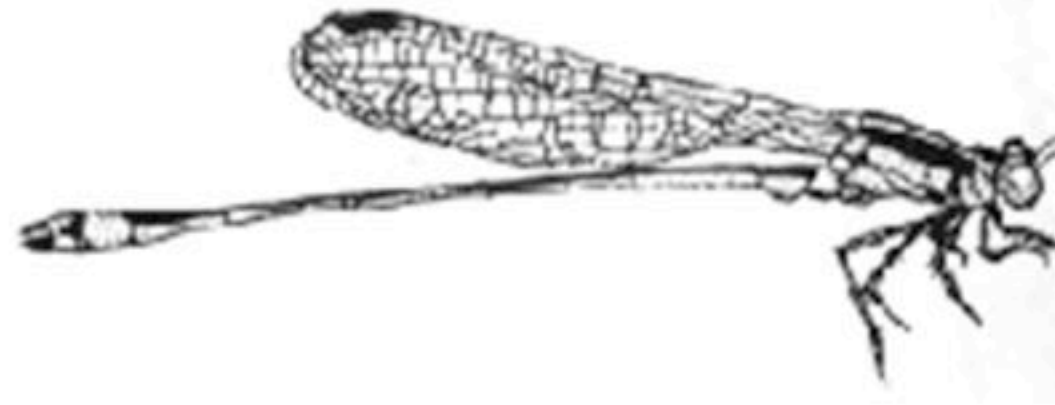
mosquito



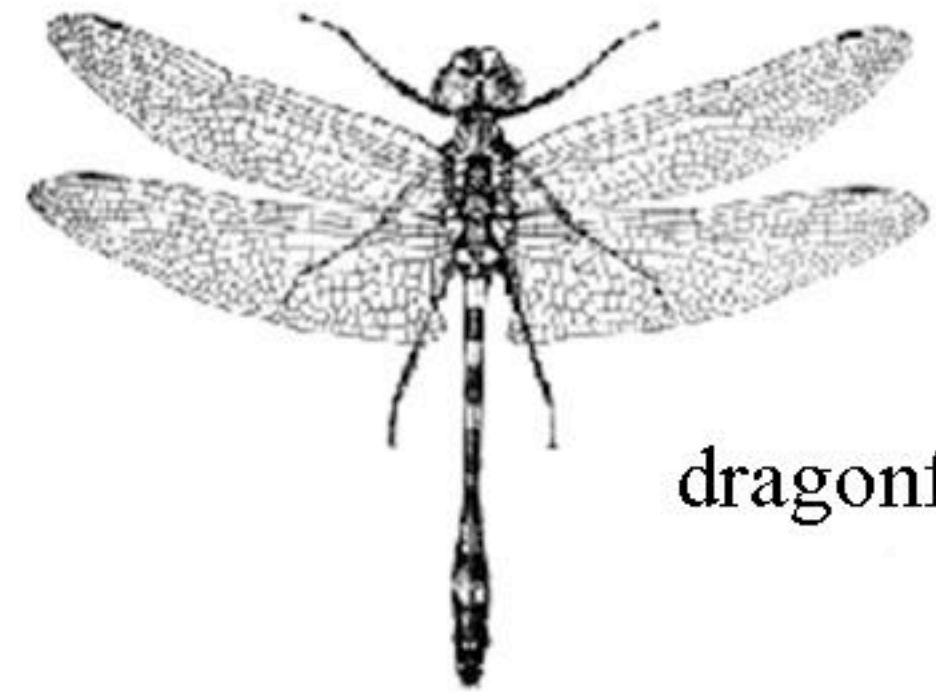
dragonfly nymph  
(larval stage)



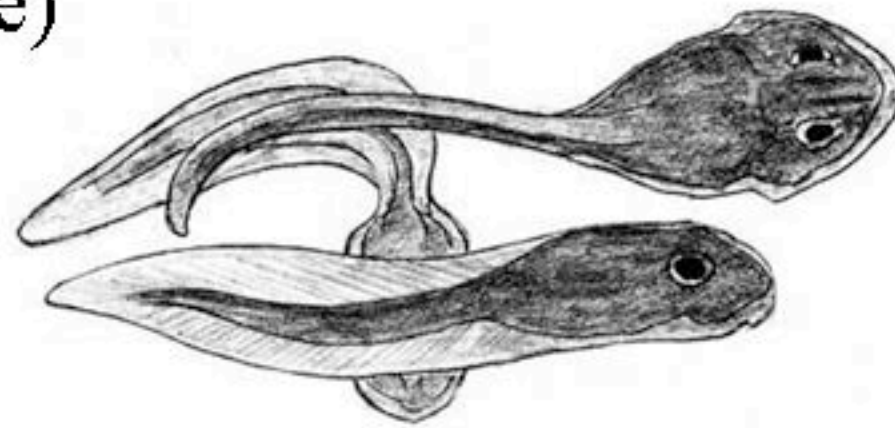
Damselfly nymph  
(larval stage)



damselfly



dragonfly



tadpole



frog

☛ These animals go through a change. This process of change is called m \_ \_ t \_ \_ \_ \_ \_ \_ \_ \_ \_ \_ .

☛ Which of these animals help us out by eating mosquitoes?

☛ Classify these animals. Write:

**H** next to **herbivores**

**S** for **scavengers**

**C** for **carnivores**

**D** for **decomposers**

**O** for **omnivores**